



SEPARATOR

A BAUER GROUP COMPANY

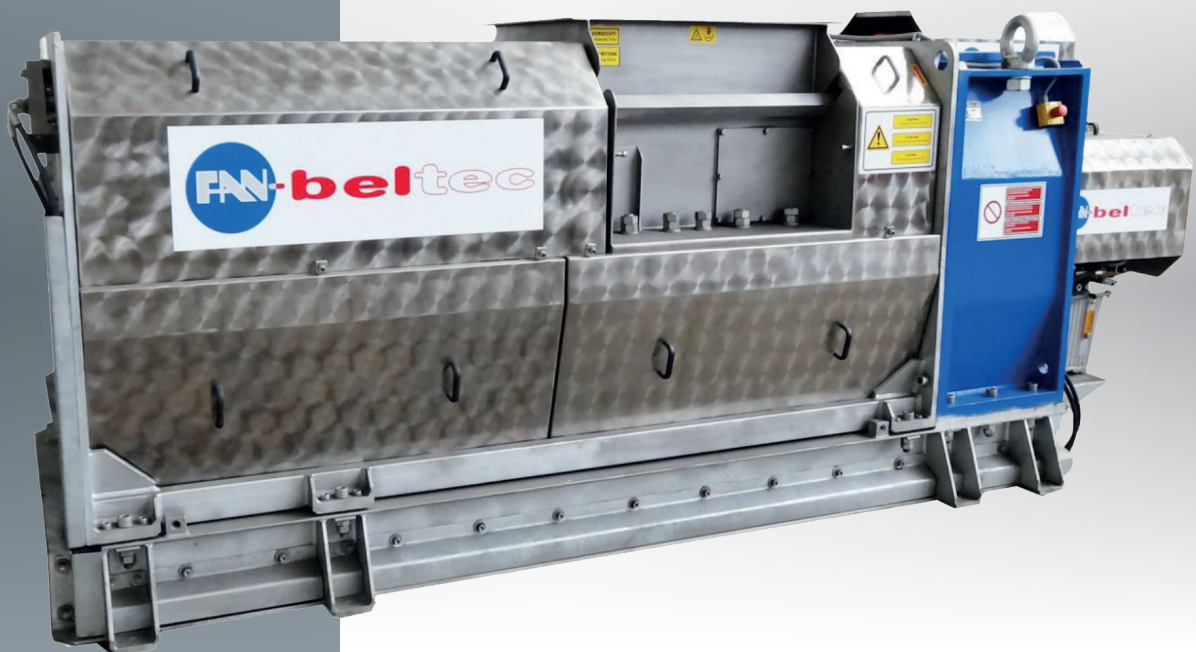
EN



WASTE WATER TREATMENT

FAN-BELTEC BP

DEWATERING OF PULPER REJECTS



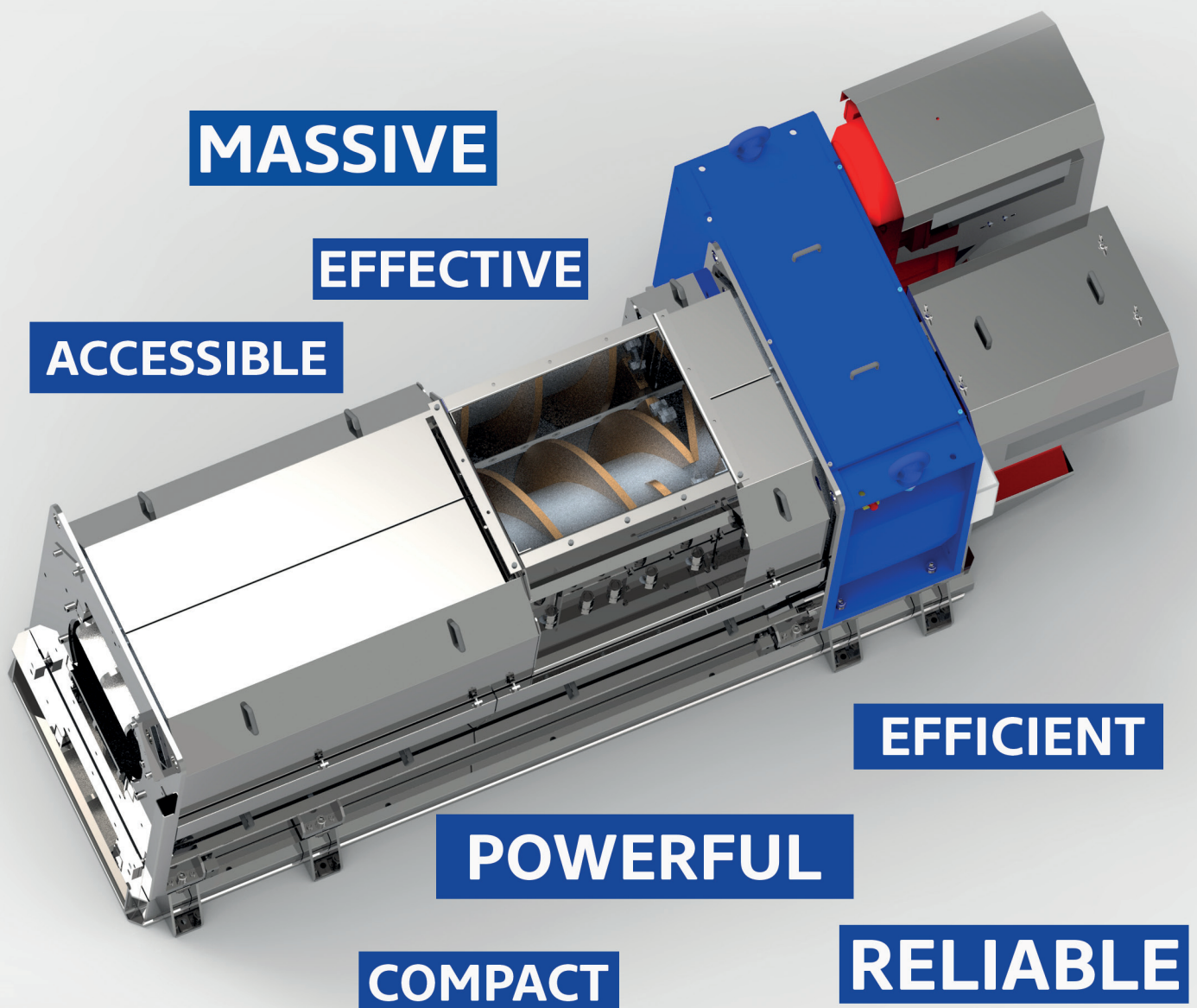
WWW.FAN-SEPARATOR.DE

CHARACTERISTICS

...excellent design from the pioneer of separation.

Efficiency is the most important design criteria of the FAN-beltec reject compactor. The structure, a combination of massive metal and exchangeable chemical resistant stainless steel components in the wear area, provides resilience and a high lifetime. With a net weight of 7,4 tons and a length of just 4,1m, of the biggest FAN-beltec, the BP601, we offer an incredible compact design, empowering pure efficiency.

Massive structure | Compact design | Symmetrical hydraulic press blades
Low maintenance requirements | Easy operation



GEARED TOWARDS THE OPERATOR

A smart control system, including frequency converter and touch-panel, enables access to all machine settings and an automatic operation as well the integration into an existing operations line system. A separate local control box at the machine location allows the control of main functions. Wear parts are exchangeable and available in different material grades, to use only needed quality. The press is easy accessible from both sides by service covers within just a moment.

**Efficient e-drives | Smart e-control | Frequency converter | Automatic reverse
Touch panel operation | Easy system integration | Fast access to wear parts**



ENABLES
SOLID-LIQUID SEPARATION



RECOVERS
WATER



PROVIDES
DRY SOLIDS



ELIMINATES
RISK OF WATER LOSS
FROM TRUCKS



SUPPORTS
WASTE MANAGEMENT



REDUCES
WEIGHT & VOLUME



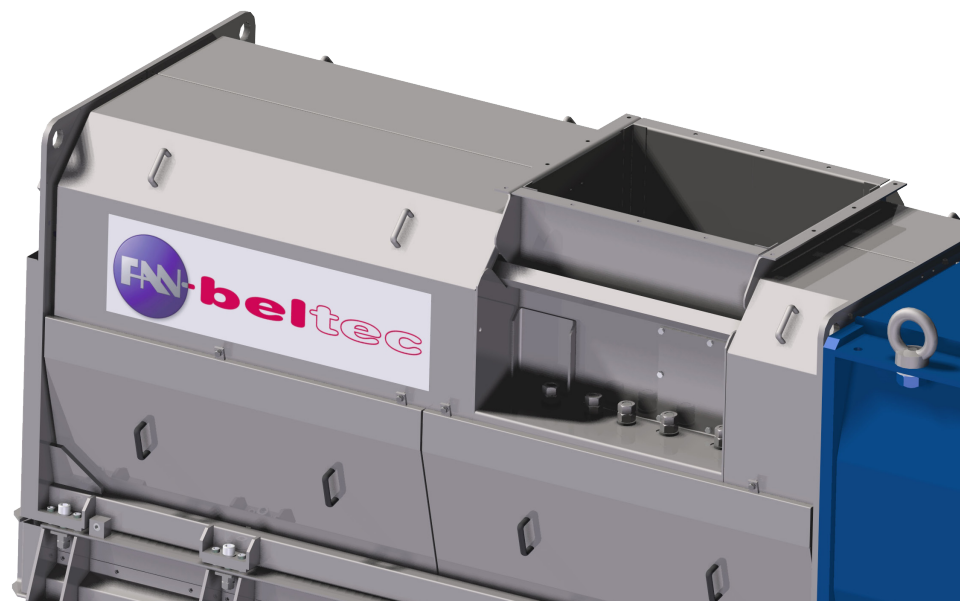
SIMPLIFIES
OPERATION &
MAINTENANCE



IMPROVES
HEATING VALUE



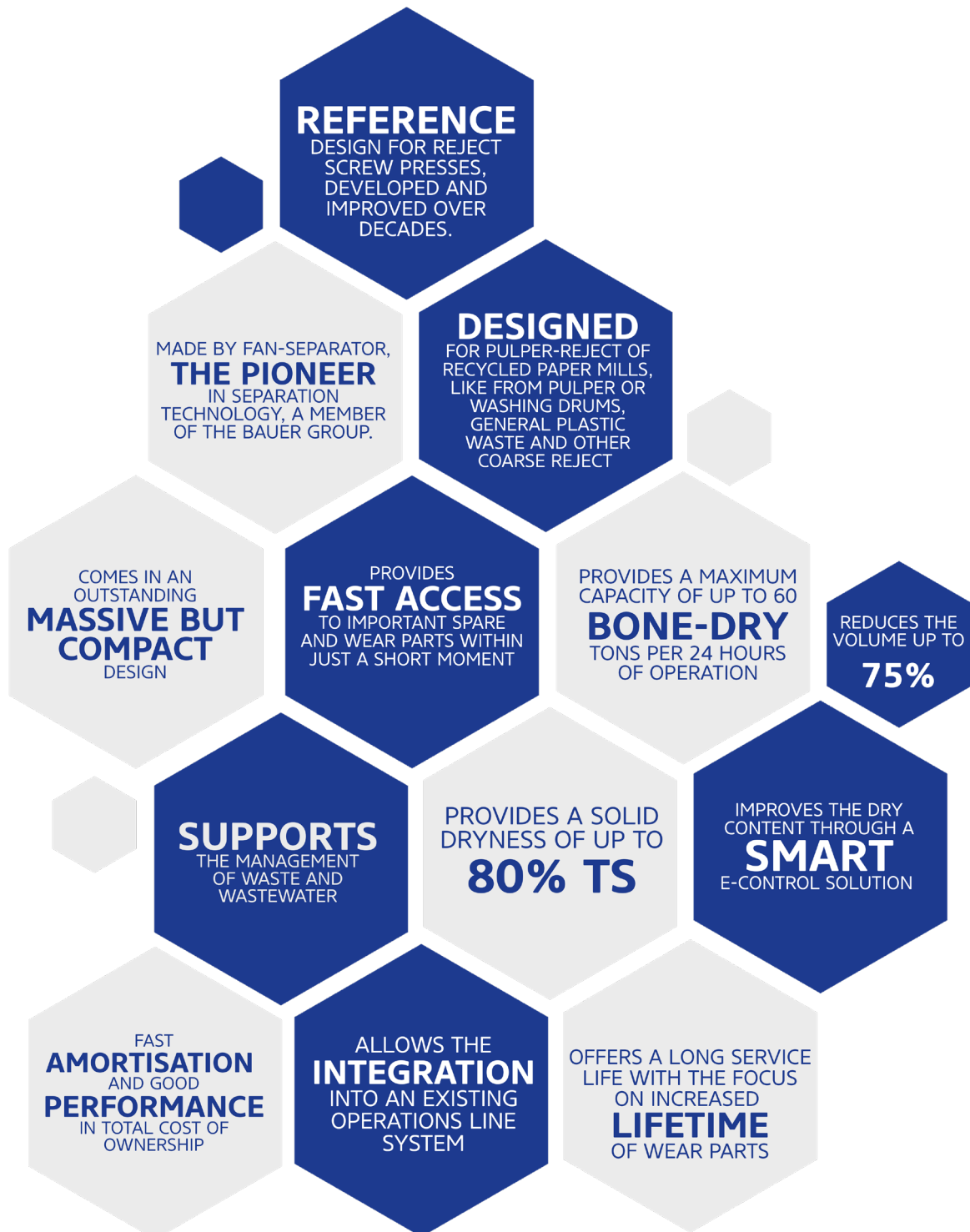
ACCELERATES
AMORTISATION

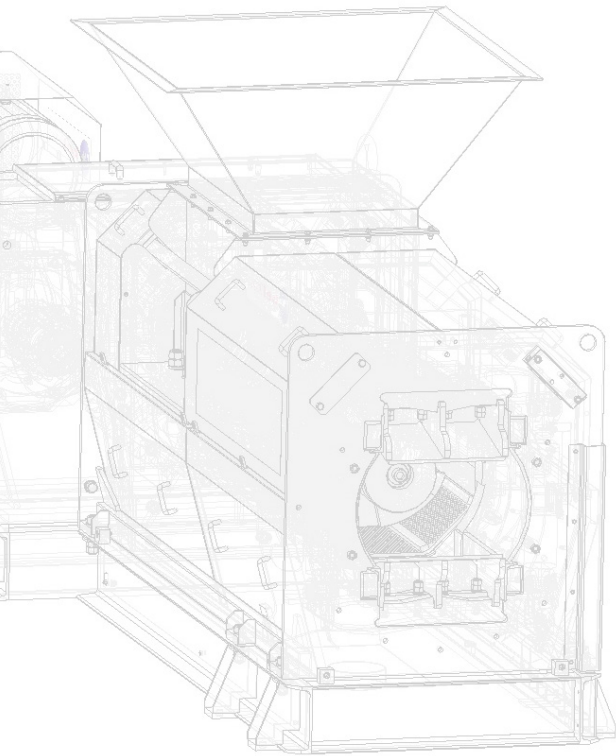


IMPRESSIVE RESULTS

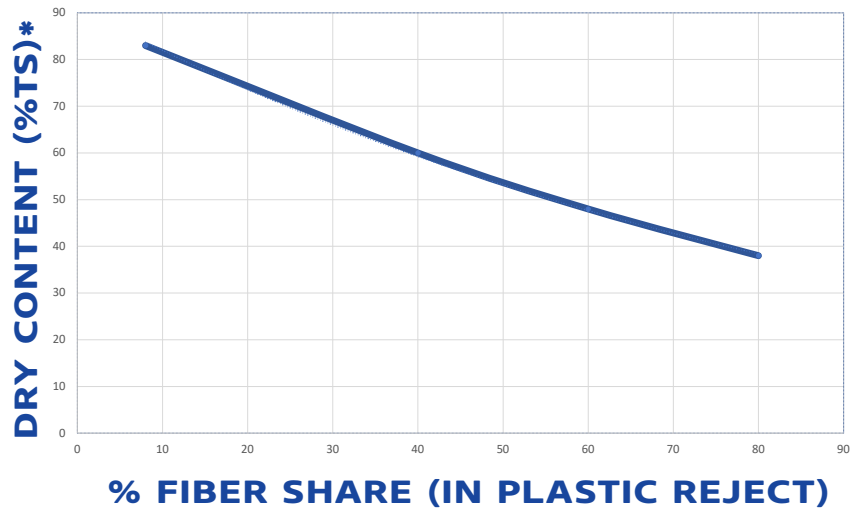
The FAN-beltec BP comes with a free-floating screw, divided into a drive and a pressing section, connected to a special designed gearbox and a powerful efficient e-drive. The compacted solids leave the press in a horizontal direction, whereby two counter-pressure blades, are provided with the right force by the smart e-control. This design avoids plugging and enables highest dryness and volume reduction.

High dewatering and dryness | Highest volume reduction | For coarse and light rejects

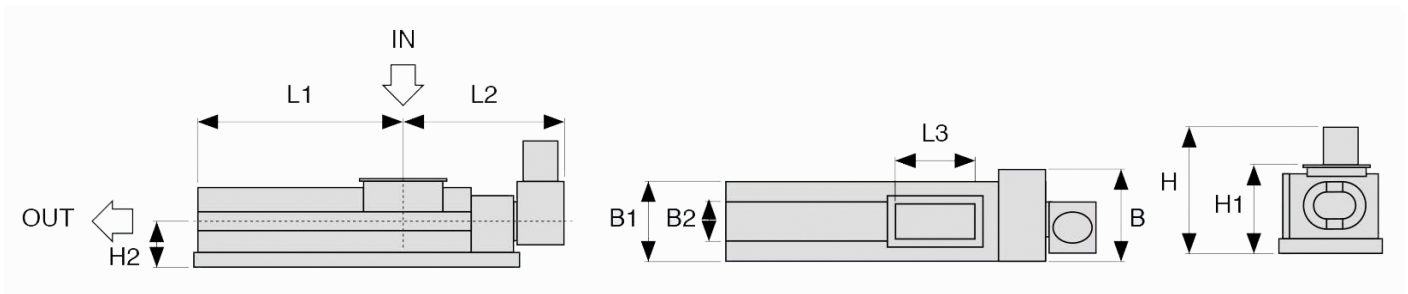




DRYNESS MATTERS



DIMENSIONS



MODEL	L1 mm	L2 mm	L3 mm	B mm	B1 mm	B2 mm	H mm	H1 mm	H2 mm	WEIGHT kg
BP 426	1229	1488	584	970	970	424	1604	1130	625	4500
BP 601	1875	2209	830	1630	1300	600	1612	1533	870	7400

MODEL	BONE DRY TONS/HOUR	INLET CONSISTENCY (%TS)	MAX. PARTICLE SIZE MM	DRY CONTENT*	VOLUME REDUCTION %	INSTALLED POWER KW
BP 426	0.3-0.8	12-20	100	UP TO 70% TS	50-75	22+2.2
BP 601	0.5-2.5	12-20	190	UP TO 80% TS	50-75	37+2.2

*RESULT DEPENDENT ON MATERIAL COMPOSITION (AMONG OTHERS).

IMPRESSIONS





GO WITH US – GROW WITH US!

FAN Separator GmbH is a company of the Austrian BAUER Group. Since its foundation in 1930, the BAUER Group, with headquarters in Voitsberg, Austria, has been focused on irrigation and waste water technology.

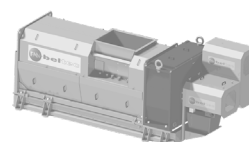
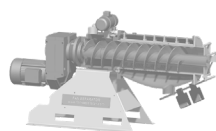
BAUER Group, the global market leader in irrigation technology, exports to around 100 countries and currently consists of 17 companies.

FAN Separator, the pioneer in separation technology, is a global player too, with thousands of installations in the industrial, municipal and agricultural waste-water area. FAN products show best results at low energy consumption and are characterized by their compact design, user-friendly operation, excellent manufacturing quality as well as long service life.

A positive contribution towards the strengthening of the environmental profile and an increase in competitiveness of our customers!



BEST VALUE SEPARATION PRODUCTS



Your Dealer

FAN Separator GmbH

Bernecker Straße 5, 95509 Marktschorgast, Germany

T +49 9227 938-400

F +49 9227 938-444

M info@fan-separator.de

W www.fan-separator.de